



**ALASKA DIVISION OF HOMELAND SECURITY &  
EMERGENCY MANAGEMENT**  
SITUATION REPORT 24-074 • March 14, 2024



Toll-Free 1.800.478.2337

Anchorage Area 907.428.7000

SEOC 907.428.7100

<p><b><u>SEOC Preparedness Level</u></b> Level 1 – Routine Operations.</p>	<p align="center"><a href="http://ready.alaska.gov">http://ready.alaska.gov</a></p>	<p><b><u>National Terrorism Advisory System:</u></b>  <a href="#">Read the NTAS Bulletin here</a></p>
<p><b><u>Maritime Security (MARSEC)</u></b> Level:1- Minimum Appropriate Security Measures</p>	<p><b>WHO Novel Coronavirus Pandemic (COVID-19):</b> <a href="#">2019 Novel Coronavirus</a></p>	<p><b><u>Alaska Military Installation Force Protection Level:</u></b> FPCON Bravo</p>

(Significant changes from previous situation reports are red.)

**Significant Issues:**

**Scammon Bay Fuel Shortage**

SEOC was informed yesterday that DCRA LGS is working with BIA to charter a plane several times over the next couple of months, until the regularly scheduled bulk fuel order arrives. The Tribe is currently borrowing 1000 gallons of diesel fuel from the City of Scammon Bay who states they do not have any shortage of fuel supply. SEOC will continue to offer technical assistance to Tribe during fuel shortage request process.

**Savoonga Low walrus Harvest and Food Shortage**

SEOC held an interagency meeting yesterday with Kawerak, AK VOAD partners, and ANTHC to identify food resources for the community. SEOC will continue to work with the community and partner agencies to identify food assistance resources to support the community.

**State of Alaska Department of Health (DOH)**

The DOH stands ready to assist with all aspects of public health and, in the event of a public health emergency, is supported by the SEOC and other state departments as required.

For current information, see: <https://health.alaska.gov/dph/Pages/default.aspx>  
<https://health.alaska.gov/dph/Emergency/Pages/prepared/default.aspx>

**NTAS Bulletin**

The U.S. Department of Homeland Security issued an updated National Terrorism Advisory Bulletin on May 24, 2023. The current and expired bulletins can be viewed at the below link.

<https://www.dhs.gov/national-terrorism-advisory-system>

**Travel Alerts and Conditions**

For current driving conditions, dial 511 or visit: <https://511.alaska.gov/>

**Barry Arm Landslide / Tsunami Risk**

For the latest information on the Barry Arm Landslide and Tsunami risk, click here:  
<https://dggs.alaska.gov/hazards/barry-arm-landslide.html>

## Earthquakes

United States Geological Service (USGS) Earthquake Information: <http://earthquake.usgs.gov/>  
National Tsunami Warning Center: <http://tsunami.gov/>

## Alaska Volcanoes

**Great Sitkin** Alert Level: **Watch** and Aviation Color Code: **Orange**  
**Shishaldin** Alert Level: **Advisory** and Aviation Color Code: **Yellow**

For Alaska Volcano updates, go to: <https://www.avo.alaska.edu/>

## Air Quality Index (AQI) Advisories

For the most up-to-date Air Quality Index Advisories:  
<http://dec.alaska.gov/Applications/Air/airtoolsweb/Home/Index>

## Spills of Oil and Hazardous Substances

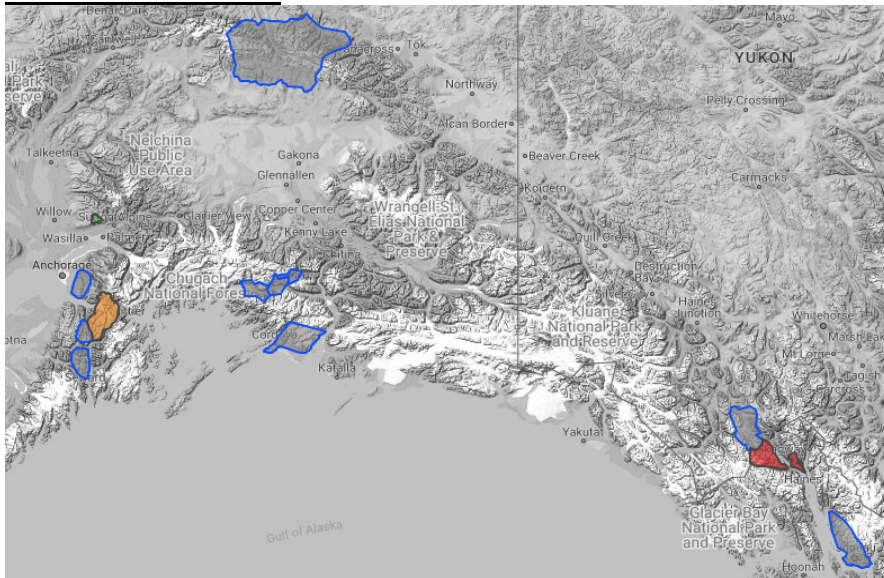
The Alaska Division of Environmental Conservation (ADEC) Spill Prevention and Response page is located at:  
<https://dec.alaska.gov/spar/>

## Alaska Cyber Security Information

State Employees may sign up for cybersecurity notifications and alerts at  
<https://oit.alaska.gov/security>

Cybersecurity and Infrastructure Security Agency (CISA)-Cybersecurity Services and Tools:  
[www.cisa.gov/free-cybersecurity-services-and-tools](http://www.cisa.gov/free-cybersecurity-services-and-tools)

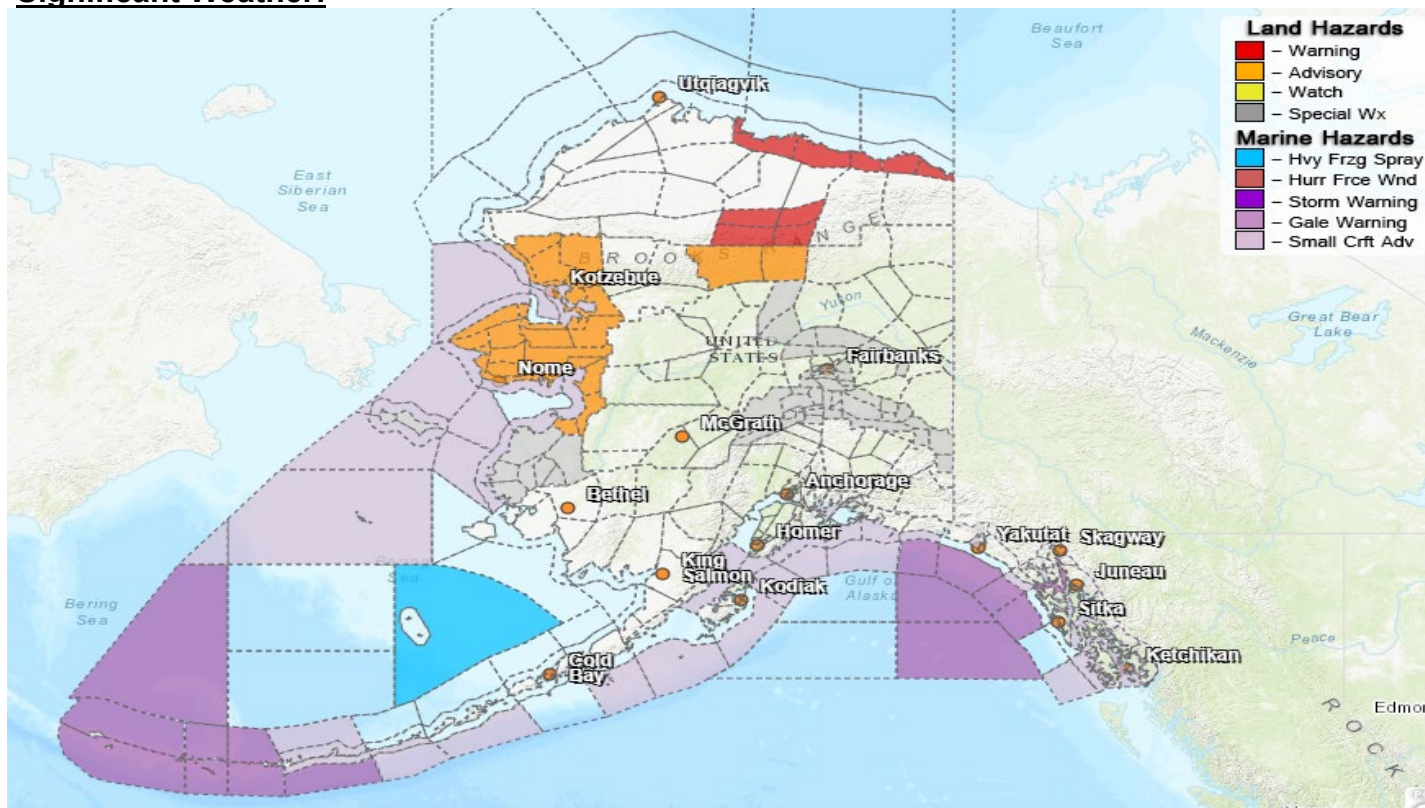
## Avalanche Hazard



**Travel in avalanche terrain is not recommended. Avoid being on or beneath all steep slopes.**  
**Haines- HIGH** at all elevations  
**Turnagain Pass- CONSIDERABLE** at all elevations

For information and the most current avalanche conditions, go to <https://alaskasnow.org>

## Significant Weather:



## **Special Weather Statement**

- **Noatak Valley; Kivalina and Red Dog Dock; Lower Kobuk Valley; Baldwin Peninsula; Northern Seward Peninsula; Shishmaref; Bering Strait Coast; Southern Seward Peninsula Coast; Interior Seward Peninsula; Eastern Norton Sound and Nulato Hills; Yukon Delta Coast; Lower Yukon River; St Lawrence Island-significant warmup with possible storms next week**
- **Dalton Highway Summits; White Mountains and High Terrain South of the Yukon River-windy with blowing snow over highways this weekend**
- **Upper Tanana Valley; Eastern Alaska Range-Mixed precipitation and warming temps this weekend**

## **Wind Chill Advisory**

- **South Slopes of The Central Brooks Range** – in effect until 10PM this evening
- **Noatak Valley; Kivalina and Red Dog Dock; Lower Kobuk Valley; Baldwin Peninsula; Northern Seward Peninsula; Shishmaref; Bering Strait Coast; Southern Seward Peninsula Coast; Interior Seward Peninsula; Eastern Norton Sound and Nulato Hills** – In effect until 1PM this afternoon

## **Wind Chill Warning**

- **Central Brooks Range; Eastern Beaufort Sea**-in effect until 10PM this evening
- **Central Beaufort Sea Coast**-in effect until 1PM this afternoon

For more information and the most current weather, Watches / Warnings / Advisories go to:

<https://www.weather.gov/arh/>

**The Next Situation Report** will be **March 15, 2024**. A significant change in the situation or the threat level will prompt an interim report. This report is posted on the internet at <https://ready.alaska.gov/sitrep>.

To register for email distribution, go to <http://list.state.ak.us/mailman/listinfo/dhsem.situation.report>. Direct questions regarding this report to the SEOC at 907-428-7100 or [seoc@alaska.gov](mailto:seoc@alaska.gov).